



Northumberland
County Council

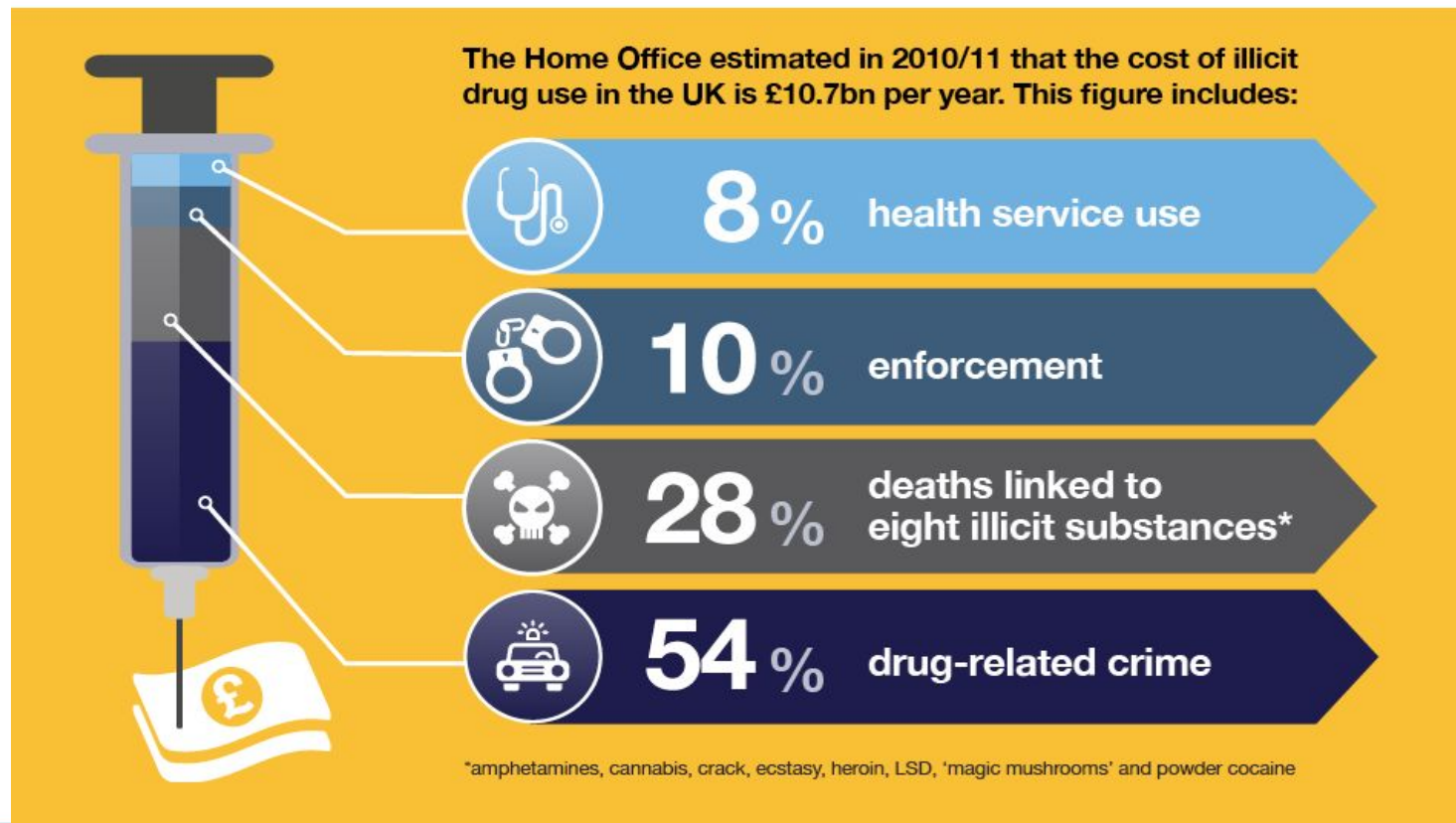


Specialist Substance Misuse Services
Health and Wellbeing
Overview and Scrutiny Committee
15 May 2018

www.northumberland.gov.uk

Policy Context

- Historically, drug policy focussed on reducing offending linked to substance misuse this led to investment in prescribing and pharmacological interventions, resulting in success in getting more people into treatment, stabilising and retaining them in services.
- The Drug Strategy 2010 increased focus on people successfully completing treatment, progressing with recovery and for some to achieving abstinence.
- In 2013, specialist substance misuse services were re-focussed as a recovery oriented treatment system, ensuring individuals were treated holistically with increased focus on mutual aid and peer led approaches as Narcotics Anonymous, Alcoholics Anonymous and SMART recovery. Wider recovery support for housing, employment and training was also provided.



Investing in drug & alcohol treatment saves money

£2.4 billion

Combined benefits of drug
and alcohol treatment

£4

Social return on every **£1**
invested in drug treatment
a total of **£21** over 10 years

£3

Social return on every **£1**
invested in alcohol treatment
a total of **£26** over 10 years





Northumberland Recovery Partnership

- There are just over 1000 people in Northumberland who are misusing opiates based substances, 889 are in treatment (2016/2017).
- 43% have been in treatment for under 2 years and 32% have been in treatment for 6 years or more.
- Most of these clients are on a supervised methadone prescription.

- **NTW**

- **Turning Point**

- **Changing Lives**

Our vision is to provide a Recovery
Orientated

Treatment System whereby recovery from
drug and alcohol addiction and abstinence
is the goal.

Counselling
Women's Group
SMART Recovery
Peer Mentoring

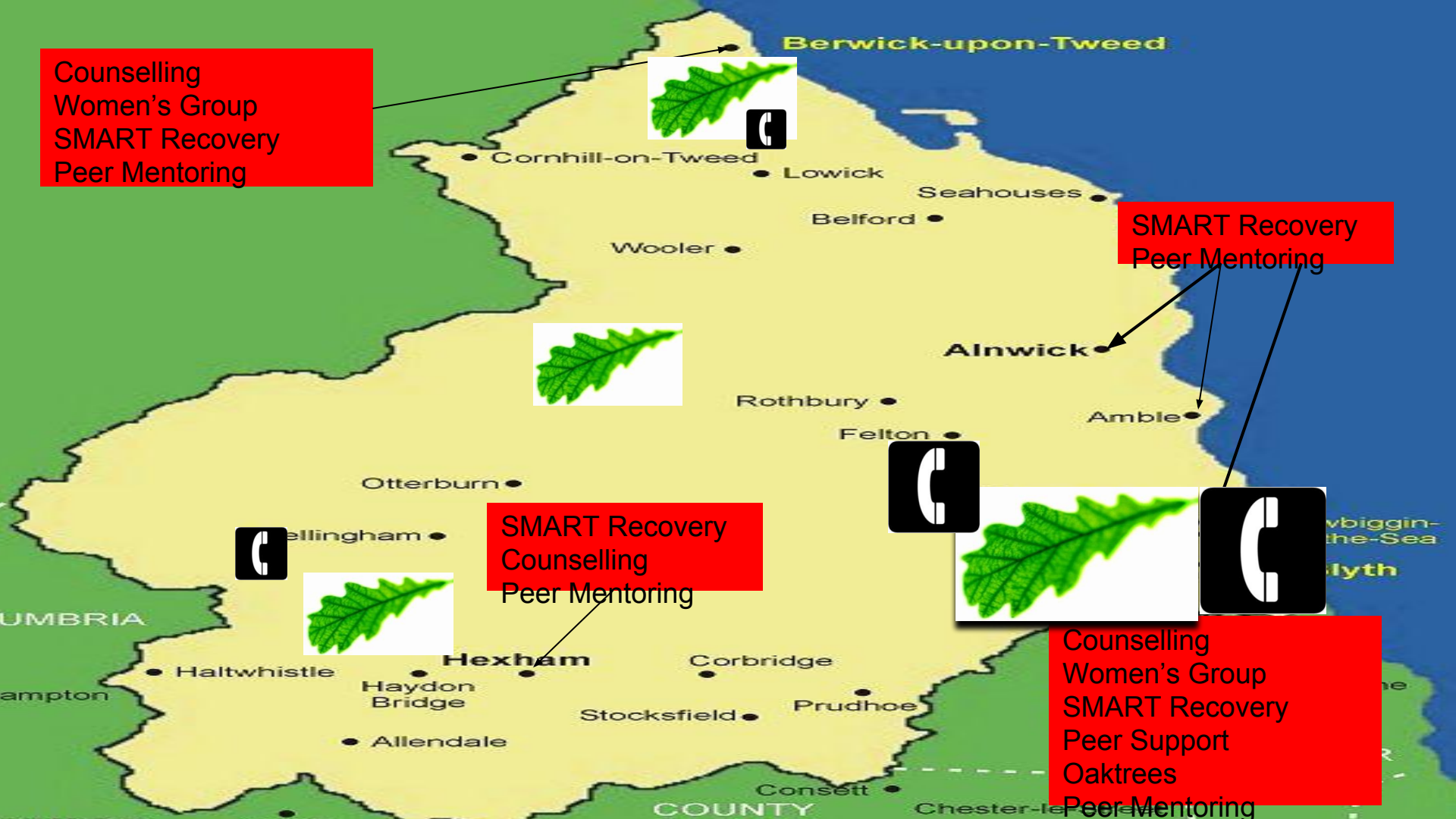


SMART Recovery
Peer Mentoring

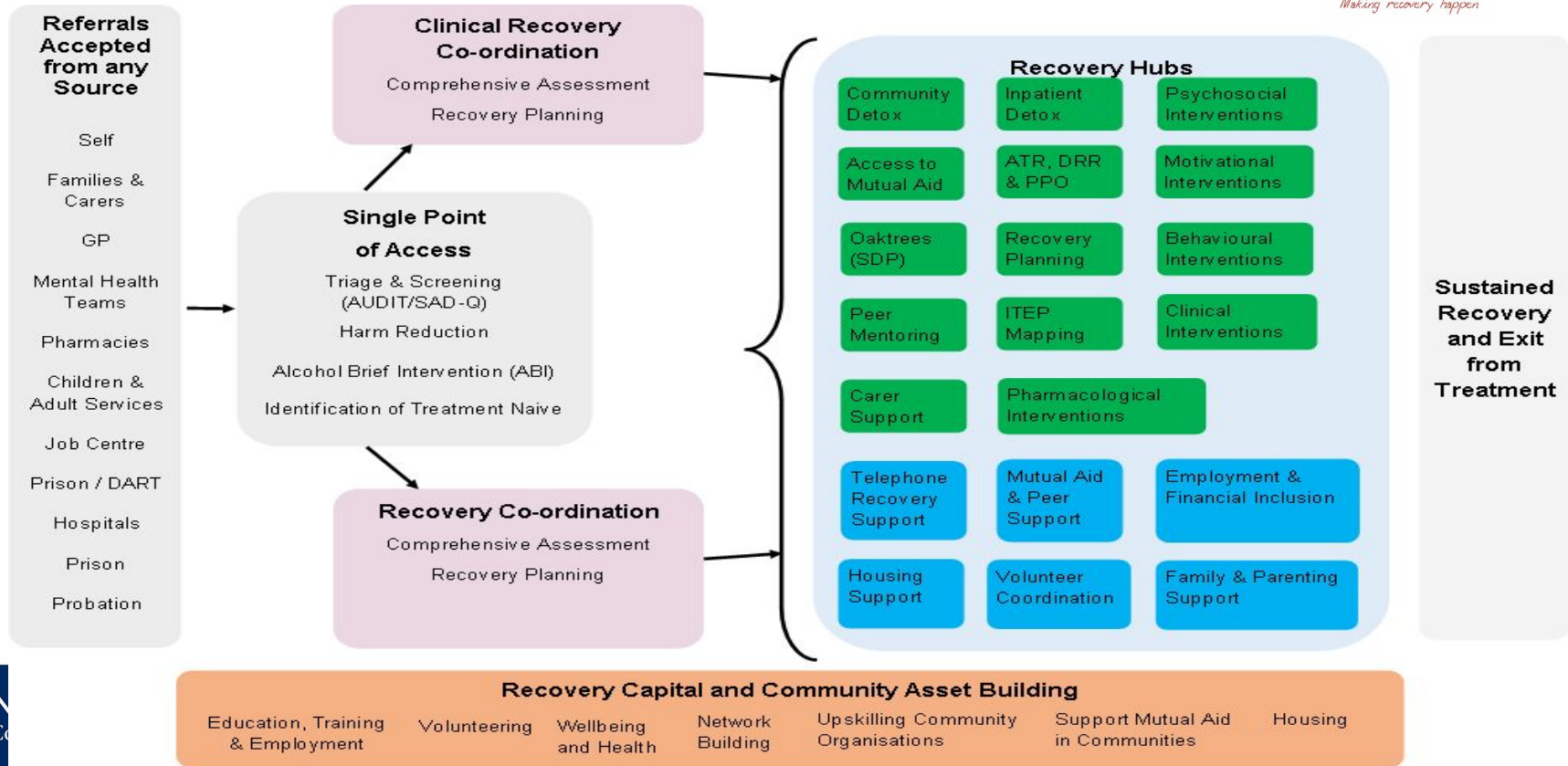


SMART Recovery
Counselling
Peer Mentoring

Counselling
Women's Group
SMART Recovery
Peer Support
Oaktrees
Peer Mentoring



Model



Evidence Base

Opiate Substitution Therapy (OST) using methadone or buprenorphine has a strong evidence /research base which demonstrates a reduction in negative impact of illicit drug use:

- Reduction in illicit heroin/opiate use
- Reduction in drug related crime
- Reduction in drug related physical harms including blood borne virus transmission
- Reduction in risk of drug related death

Evidence Base

Evidence also indicates the treatment components more likely to deliver the benefits of OST include:

- an organisation and staff able to support and sustain change, including motivated staff with appropriate qualifications and confidence
- staff who believe in the treatment they are delivering, have a genuine interest and concern for the people they work with and respond empathically towards
- a sufficient dose of OST to prevent withdrawals or, if needed, high enough to increase tolerance and attenuate any response to injected heroin
- longer retention in OST and an initial orientation to maintenance for up to one year or more
- a range and quality of psychosocial interventions that enable emotional, psychological, and social well-being

Questions and contacts

- Professor Eilish Gilvarry, Clinical Director of Specialties and Forensic Services at Northumberland, Tyne & Wear NHS Foundation Trust & Consultant Psychiatrist in Addictions
Email: Eilish Gilvarry@ntw.nhs.uk
- Dr Margaret Orange, Treatment Effectiveness & Governance Manager (Addictions Service)
Northumberland Tyne & Wear NHS Foundation Trust Email: margaret.orange@ntw.nhs.uk
- Liz Morgan, Director of Public Health, Northumberland County Council Email.
elizabeth.morgan@northumberland.gov.uk
- Liz Robinson, Senior Public Health Manager (Drugs and Alcohol), Northumberland County Council
liz.robinson@northumberland.gov.uk